

IMPORTANT: IN THE INTEREST OF PRODUCT PERFORMANCE AND SAFETY PLEASE READ THESE INSTALLATION AND WARRANTY INSTRUCTIONS BEFORE INSTALLING THE PRODUCT.



SAL products are designed in accordance with all mandatory International and AS/NZS Standards, which require installation in accordance with AS/NZS3000 by a qualified installer and regular cleaning and maintenance of the equipment. Products are sold in accordance with the following instructions and SAL standard terms and conditions of sale, available via www.sal.net.au.

Due to continued product and information updates, product data sourced from sal.net.au shall not form part of any contract and or technical performance guarantee unless expressly confirmed in writing by SAL at the time of order.

DALBY 56, 56+ & AUGUSTA 52, 52+ & CROYDON 48, 48+ AC CEILING FAN electrical and installation specification effective 11/8/2025.

Model No.	Input (V)/(Hz)	Power (W)	Line Current (A)	Max. Airflow (m³/h)	Efficacy (lm/W)	Dimmable LED	CRI	Fitting Colour	Mass (N.W. Kg)	Dimension D x H (mm)
SACF11/56/4WH	220-240/50	60	Max. 0.25A	13050	—	—	—	White	7.4	Ø1460 x 300
SACF11/56/4BK	220-240/50	60	Max. 0.25A	13050	—	—	—	Black	7.4	Ø1460 x 300
SACF11/52/4WH	220-240/50	54	Max. 0.24A	11630	—	—	—	White	6.4	Ø1362 x 300
SACF11/52/4BK	220-240/50	54	Max. 0.24A	11630	—	—	—	Black	6.4	Ø1362 x 300
SACF11/48/3WH	220-240/50	48	Max. 0.2A	10820	—	—	—	White	5.4	Ø1252 x 300
SACF11/48/3BK	220-240/50	48	Max. 0.2A	10820	—	—	—	Black	5.4	Ø1252 x 300
SACF11/56/4WH/L	220-240/50	Motor: 60 LED: 20	Max. 0.35A	13050	110	No	> 80	White	7.6	Ø1460 x 325
SACF11/56/4BK/L	220-240/50	Motor: 60 LED: 20	Max. 0.35A	13050	110	No	> 80	Black	7.6	Ø1460 x 325
SACF11/52/4WH/L	220-240/50	Motor: 54 LED: 20	Max. 0.34A	11630	110	No	> 80	White	6.6	Ø1362 x 325
SACF11/52/4BK/L	220-240/50	Motor: 54 LED: 20	Max. 0.34A	11630	110	No	> 80	Black	6.6	Ø1362 x 325
SACF11/48/3WH/L	220-240/50	Motor: 48 LED: 20	Max. 0.3A	10820	110	No	> 80	White	5.6	Ø1252 x 325
SACF11/48/3BK/L	220-240/50	Motor: 48 LED: 20	Max. 0.3A	10820	110	No	> 80	Black	5.6	Ø1252 x 325

Electrical class	Class I	Earth leakage current	< 1mA
Power factor	AC Motor: >0.95, LED: >0.8	Touch current	< 0.7mA
Climate class	Class T	Dimmable	No
Operating ambient min/max (°C)	-10 to 40	Storage ambient limit (°C)	-10 to 60
Operating humidity	+10% to 85% RH, NC	Storage humidity	+10% to 85% RH, NC
Reported TM - 21, L ₉₀ @ 85 °C (hrs)	> 36,000	Reported TM-21, 85 °C, L ₇₀ (hrs)	> 54,000
Aiming restrictions (if any)	N/A	Product application	Residential interior or weather protected exterior spaces
IK rating (if relevant)	N/A	Product installation orientation	Horizontal ceiling mount ≤ 15°
CCT (K) (Refer Model. No)	3000/4000/6000	Min. Floor to blade clearance	2100mm
CCT (K) switch control (TC)	Yes, via wall plate toggle switch	Ceiling drop	240mm
Fan control	Yes, via wall plate	Winter/Summer mode	Yes, via motor housing toggle switch
Insulation cover rating (if any)	N/A	IP rating	IP20
Replaceable LED	No (see clause 8)	PIXIE connectivity	No
User replaceable LED	No (see clause 8)	Attachment type	N/A
IP rating for interior products: The designated IP rating is "from below the ceiling" unless otherwise specified.			
IP rating ALL products; Termination of the product must be made in accordance with the IP rating.			
Earth Leakage current: Is calculated in accordance with AS/NZ 60598.1.2017/Amdt 1:2017.			

General product application requirements (if applicable) :

- CCT or POWER selections (where supplied)** – IMPORTANT, where CCT colour temperature or POWER selection switching is provided, it is important to switch OFF the power before the selection is made, otherwise equipment damage may occur.
- Recycling** – SAL encourages recycling, please consider the environment when disposing of packaging, batteries & components.
- Switching or test intervals** – For optimum product performance, good design practice does not encourage 24/7 operation of lighting products without the provision of a routine switching or regulatory test cycle. As a guide for continual operation installations, a twelve (12) hour duration for Industrial and Commercial applications and a six (6) hour duration for Residential applications should be considered.
- Product maintenance** – In line with the relevant design standards and to protect your investment, it is important to have in place a routine cleaning program that reflects the installation environment and maintains the product in a clean and functional condition. For fan, a dry dust cloth or lightly dampened cloth is suitable for cleaning. Do not use water or detergents when cleaning the fan or fan blades.



IMPORTANT - The supply must be isolated before any product maintenance or cleaning is conducted. In addition, damage to ANY cable or cord supplied with the product must be addressed as follows; For attachment type X having a specially prepared cable, if the external flexible cable is damaged, it must be replaced by an equivalent cable exclusively available from the manufacturer or authorised installer. For attachment type Y, if the external flexible cable is damaged, it must be exclusively replaced by an equivalent cable by the manufacturer or authorised installer. For attachment type Z, if the external flexible cable is damaged, the cable cannot be replaced and the luminaire must be destroyed.

5. **Adverse, corrosive and coastal installation environments** – Unless the product is specifically designated for such applications in these installation instructions, which is supported by a professional maintenance program; installation of equipment in such environments is not recommended.

6. **Dimming products** – Dimming circuits and product compatibility must be validated by the installer before installation; SAL cannot be responsible for third party changes in dimmer compatibility.

7. **Suspended products** – For installation safety, any suspended products must NOT be installed in high air movement spaces or locations subject to impact.

8. **Light source replacements** – (Non-replaceable light sources) - The light source of the product is deemed not replaceable, when the product reaches its end of life, the complete product must be replaced by a qualified installer. (Non-user replaceable light sources) - The light source of the product must only be replaced by the manufacturer or qualified installer. **Caution, risk of electric shock.**

9. **Interior downlights and sensors with remote drivers and electrical accessories** – The mounting facilities provided for the device (if any), need only be utilized if in the application of the product is required by AS/NZS3000. Drivers are not designed for installation environments that restrict conventional airflow.

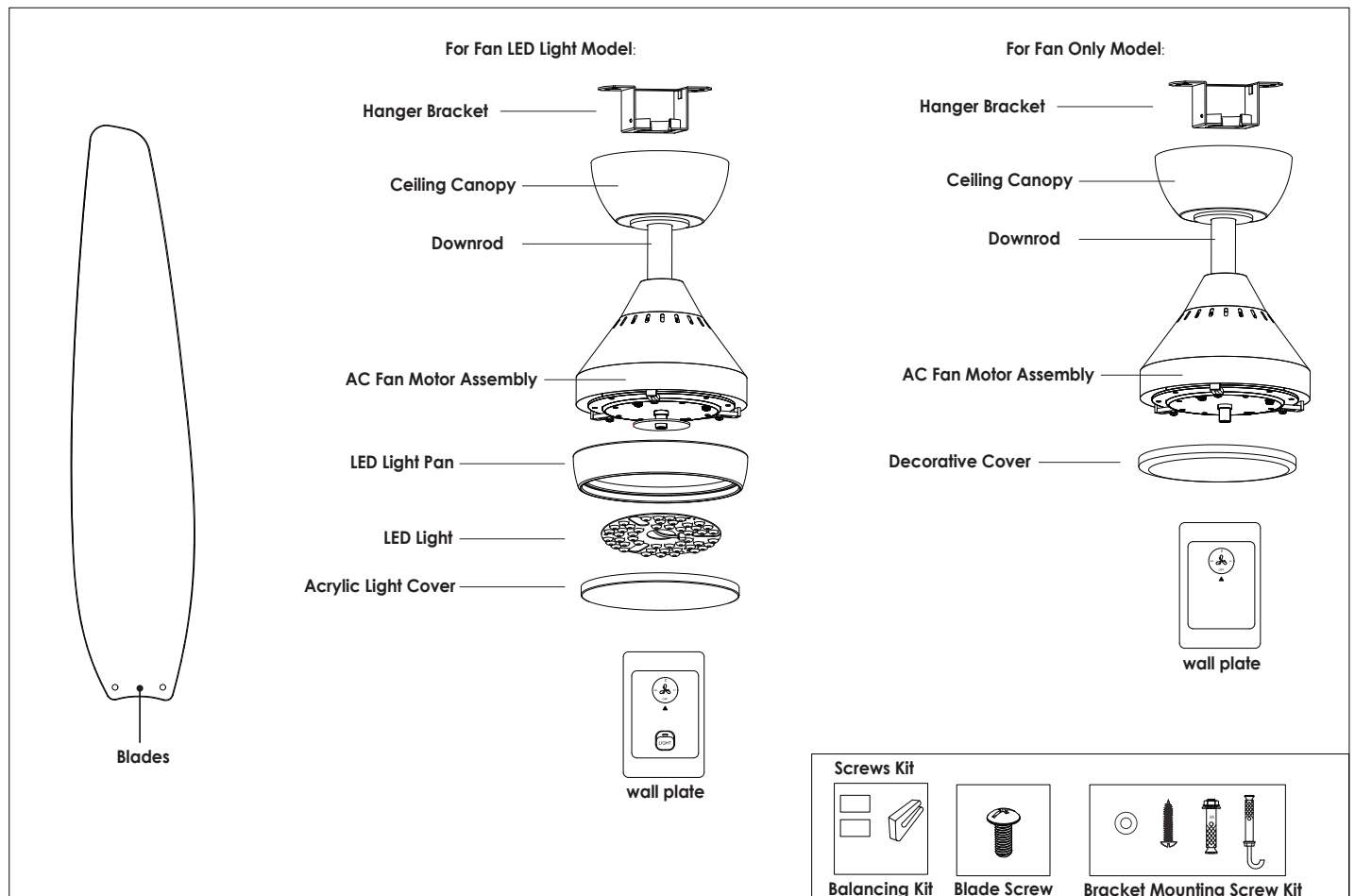
10. **Ripple injection, induced flicker (QLD & NSW regions)** – Installations subject to off-peak ripple induced flicker, (which are beyond the manufactures control), should strongly consider the use of circuit filtering products, or for interior downlight installations, the use of products designed to block the signal interferences, such as the SAL SFI series

11. **Floodlight products** – Unless nominated aiming restrictions or installation parameters apply, products are designed for installation environments between ground and 15 metres in height, subject to the desired optical performance being achieved. For floodlight installation environments that have restricted access (eg: columns and roof-lines) which are subject to unstable electrical supply or electrical surges (which void warranty), consideration of the installation of an independent surge protector is strongly recommended.

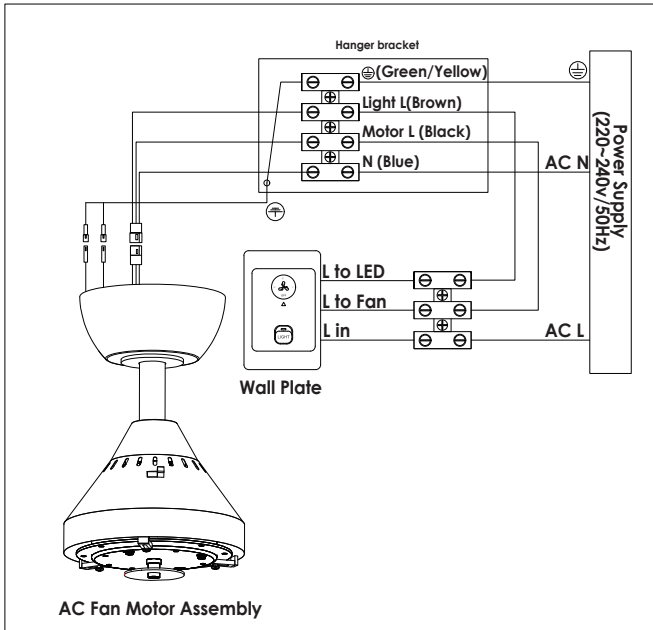
12. **Emergency enabled products** – In the interest of transport and safety, emergency products are supplied with the battery disconnected. In addition to specific emergency commissioning instructions, this battery MUST be connected at the time of installation. Continual use in emergency mode greater than 240 hours without recharge, will result in battery failure and void battery warranty.

13. **Specific installation procedures** (if any) - **IMPORTANT: This product is NOT a toy and is designed for use by a responsible adult.** This product must be installed by a licensed electrician:

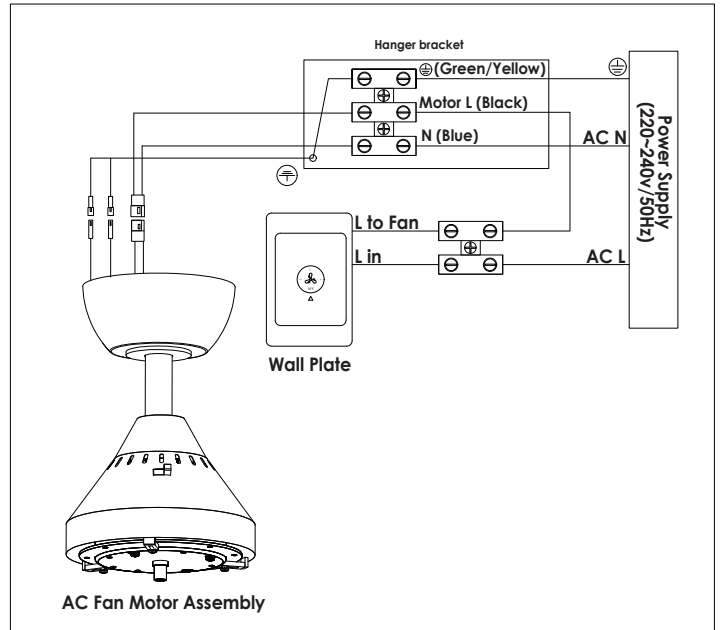
Part List:



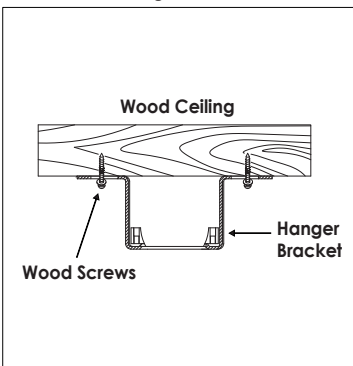
Wire Connection for Fan LED Light Model:



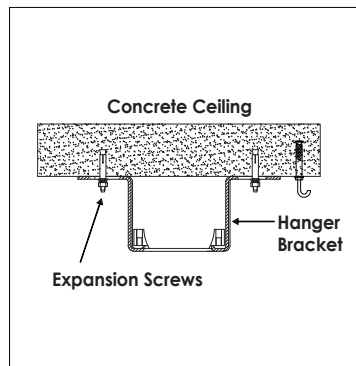
Wire Connection for Fan Only Model:



Installation of Hanger Bracket:



OR



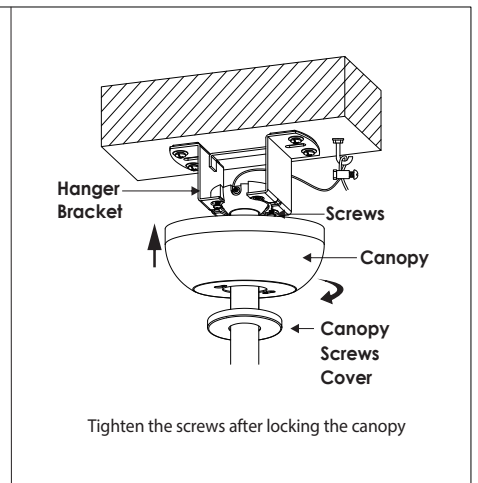
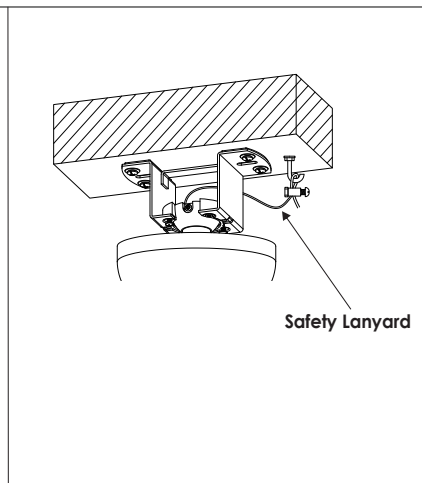
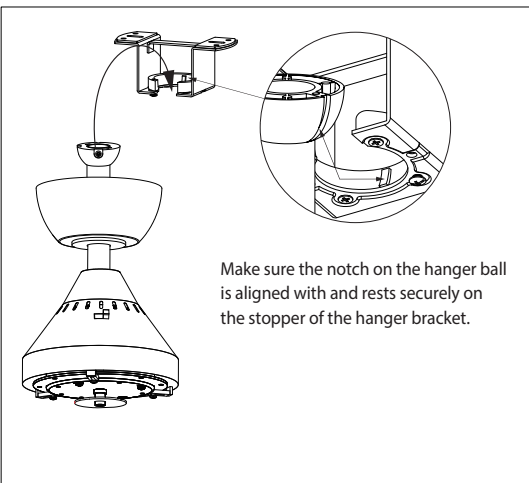
WARNING:

THE STRUCTURE THAT THE CEILING FAN IS CONNECTED TO MUST BE CAPABLE OF SUPPORTING A WEIGHT OF AT LEAST 45KG. THE FIXING MUST BE ABLE TO SUPPORT THE MOVING WEIGHT OF THE FAN AND MUST NOT TWIST OR WORK LOOSE.

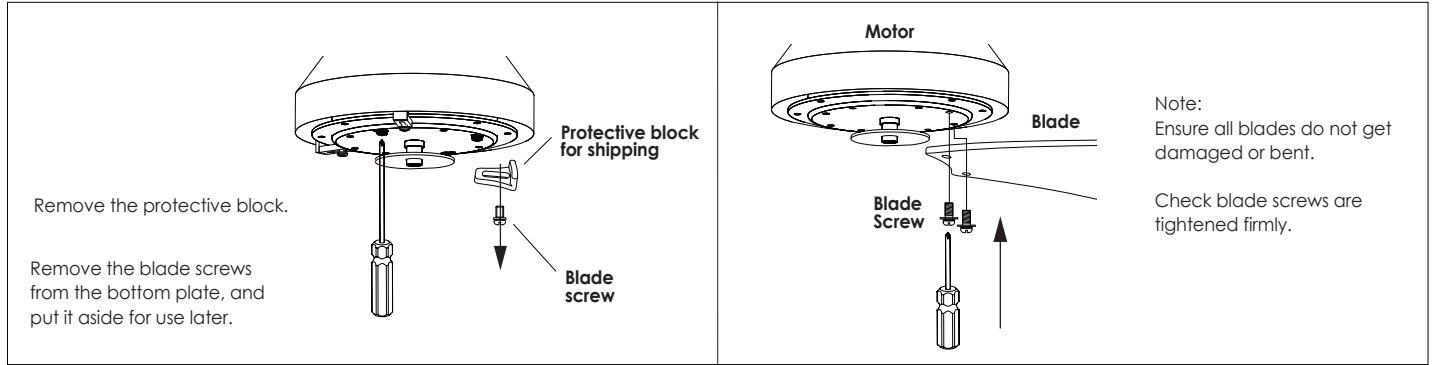
INSTALLATION OF THE MOUNTING BRACKET TO A LOAD-BEARING SUB-STRUCTURE IS RECOMMENDED.

TO REDUCE THE RISK OF INJURY TO PERSONS, INSTALL FAN SO THAT THE BLADE IS AT LEAST 2.1M ABOVE THE FLOOR, AND 150MM FROM WALL.

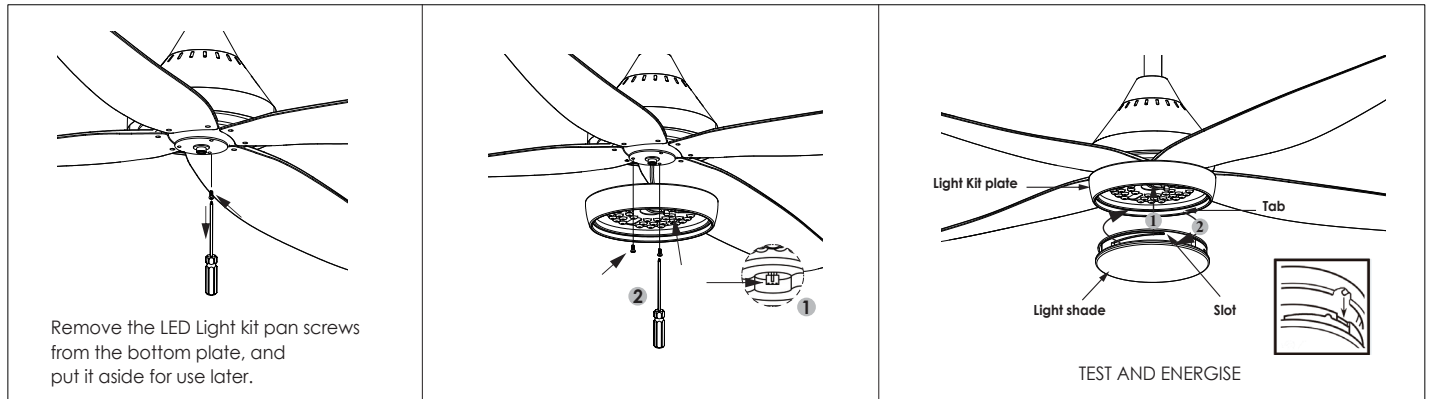
Installation of Downrod and Canopy:



Installation of Fan blades:

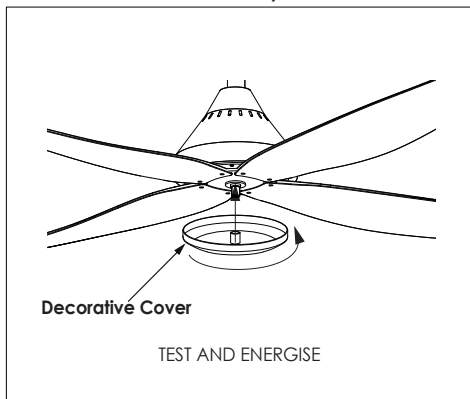


Installation of LED Light for Fan LED light Model:

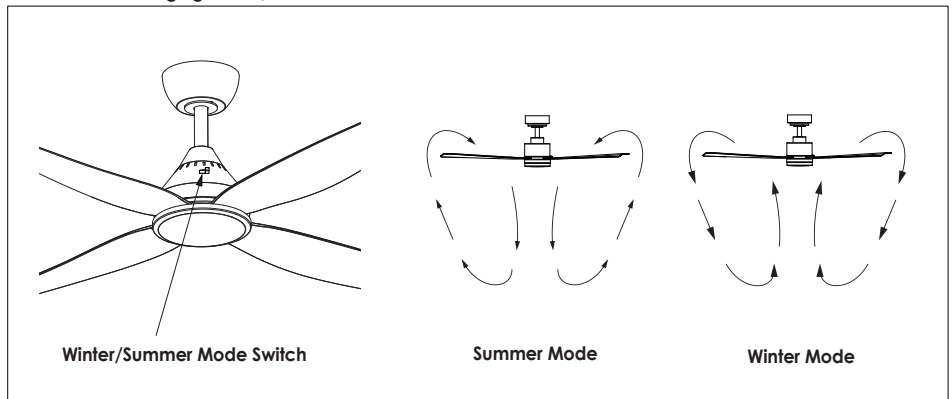


To change the CCT: Quickly flip the wall switch to cycle through the available CCT settings.

Installation of cover for Fan Only Model:



Instruction of changing Winter/Summer mode:



14. Warranty – In accordance with SAL's standard terms and conditions of sale, SAL warrant this product to be free from defects in materials and or workmanship for a period as stated below for goods not subject to incorrect installation, maintenance, operation, mishandling, environmental, unauthorised modifications or electrical operating conditions outside the nominated product specification as detailed in these installation instructions. The benefits to you given by this warranty are in addition to other rights and remedies you have under law. Our goods come with guarantees that cannot be excluded under the Australian Consumer Law. You are entitled to a replacement or refund for a major failure and compensation for any other reasonably foreseeable loss or damage. You are also entitled to have the goods repaired or replaced if the goods fail to be of acceptable quality and the failure does not amount to a major failure.

NSW | ACT
QLD
VICT | TAS
SA | NT
WA
NZ

- SAL National Pty Ltd, 40 Biloela Street Villawood NSW 2163
- SAL National Pty Ltd, 36 Whitelaw Place Richlands QLD 4077
- SAL National Pty Ltd, 46-48 Keys Road Moorabbin Victoria 3189
- SAL National Pty Ltd, 79 Fredrick St Welland SA 5007
- SAL National Pty Ltd, 29 Beringarra Av Malaga WA 6090
- Hamer, 130 Bush Road, Albany, Auckland, 0632

| P # 02 9723 3099
| P # 07 3879 5999
| P # 03 9532 3168
| P # 08 7084 1958
| P # 08 9248 7458
| P # 0800 239 239



For all warranty matters, please scan the following QR code for terms and conditions, together with contact details and instructions.