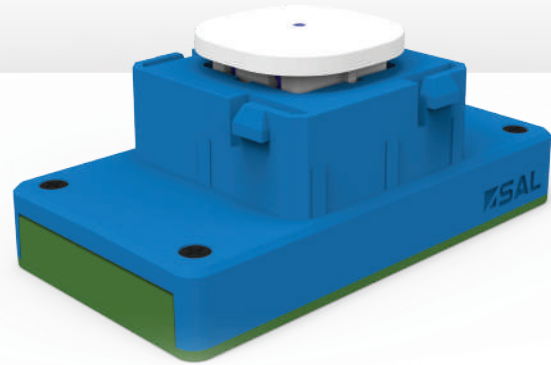


PIXIE



Multifunction Remote Control Mech

SMRM/BTAS

Installation Instructions



⚠ This product is a professional product and must be installed by a licensed electrician.

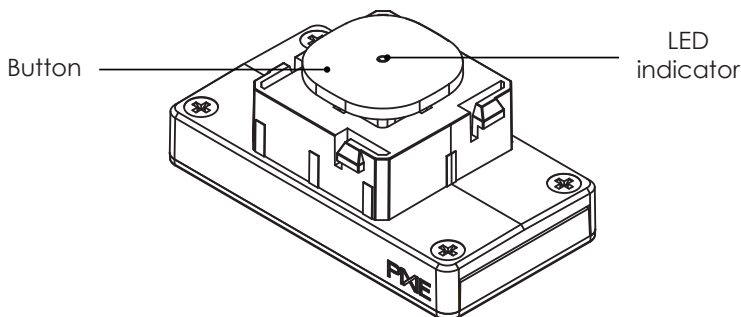
 WARNING	
KEEP OUT OF REACH OF CHILDREN Swallowing can lead to chemical burns, perforation of soft tissue, and death. Severe burns can occur within 2 hours of ingestion. Seek medical attention immediately.	

IEC

1. Product Introduction

The PIXIE Multifunction Remote Control Mech is the 3rd generation multifunction remote control, that can be installed on switch plates to blend perfectly into the home environment. Without the need of running wires, this product brings huge flexibility for the application and installation.

1.2 Product Parts



1.1 Product Features

- Coin battery powered, install anywhere without worrying wiring availability
- Designed for wall installation like normal Australian switch mechs, blends well with interior design.
- Fit into most Australian switch plates
- Max. 3 gang installation
- LED indicator colour selectable - blue or amber
- PIXIE Multifunction Remote Control Gen 3, can pair with a master device, a group or scenes

2. Specifications and Capabilities

Product Description	Model NO.	Battery	Colour	Dimensions L x W x H (mm)	Weight (g)
PIXIE Multifunction Remote Control Mech	SMRM/BTAS	CR2032 * 2	Blue	45 x 24.5 x 19	17

Product Application	Interior residential or commercial	Product Installation	Wall mount
Operating Ambient Temperature	0°C - 40°C	Storage Ambient Temperature	0°C - 60°C
Operating Humidity	0-85% RH, NC	Storage Humidity	0-85% RH, NC
IP Rating	IP20		

3. Installation process

3.1 Pull out the insulation insert

3.2 Fit the PIXIE Multifunction Remote Control Mech onto a compatible switch plate

3.3 Mount the switch plate to desired wall surface

3.4 Pair the PIXIE Multifunction Remote Control Mech with a master device, a group or a scene in PIXIE system

4. Operations

4.1 Setting operations

Operation	Function	LED Indicator	Remark
4 Clicks	Enter pairing mode, the mode lasts 10 seconds	Quickly flash in blue for 10 seconds	<ul style="list-style-type: none"> - Can pair with a PIXIE master device, a group or two scenes - After a successful pairing, pairing mode will end. Pressing the button during pairing mode will cancel and exit pairing mode - LED indicator will flash twice, and stay solid blue for 2 seconds to indicate the pairing is successful
5 Clicks	Change the LED indicator color	-	Toggle LED indicator colour selectable - blue or amber
9 Clicks	Reset the product to factory default	Slowly flash ble for 3 seconds	All the previous pairing will be cleared after a successful reset

4.2 Control operations - paired with a master device

Operations when configured to control a device

Operation	Paired device		
	PIXIE Smart Dimmer	PIXIE Smart RGB Strip, RGB Strip Controller	PIXIE Smart Single Color Strip, Single Color Strip Controller
1 Click	Turn ON/OFF. When turning the light on, it will work on the last used brightness setting	Turn ON/OFF. When turning the light on, it will work on the last used brightness setting	Turn ON/OFF. When turning the light on, it will work on the last used brightness setting
2 Clicks	Shortcut to the maximum brightness	Shortcut to the maximum brightness	Shortcut to the maximum brightness
3 Clicks	Switch to the next color temperature, which circulates in Warm White->Cool White->Daylight. For S9842 downlight only.	Switch to the next color. Color circulates in White->Red->Green->Blue.	NA
Long Press	When the light is on, long press the button to dim up or down, release the button to stop. When the light is off, long press the button to turn on the light at minimum brightness and increase brightness, release the button to stop.	When the light is on, long press the button to dim up or down, release the button to stop. When the light is off, long press the button to turn on the light at minimum brightness and increase brightness, release the button to stop.	When the light is on, long press the button to dim up or down, release the button to stop. When the light is off, long press the button to turn on the light at minimum brightness and increase brightness, release the button to stop.

4.3 Control operations - paired with a group

Operations when configured to control a group

Operation	Result	Remark
1 Click	Turn ON/OFF the Group	NA
2 Clicks	Shortcut to the maximum brightness	Dimmable product group only
3 Clicks	Switch colour/colour temperature	Subject to the product group functionality
Long Press	Switch colour/colour temperature	Dimmable product group only

4.4 Control operations - paired with scenes

Operations when configured to control scenes

Operation	Result
1 Click	Activate scene 1
2 Clicks	Activate scene 2

Scan QR code or go to App store (IOS) or Google Play (Android) to download the free PIXIE app to your smart phone. IOS: Requires IOS 6.0 or later. Compatible with iPhone, iPad and iPad touch
 Android: Requires Android 4.4 or above, devices must support Bluetooth 4.0
 Specifications above are for reference only and may vary without prior notice.



Warranty – In accordance with SAL's standard terms and conditions of sale, SAL warrant this product to be free from defects in materials and or workmanship for a period as stated below for goods not subject to incorrect installation, maintenance, operation, mishandling, environmental, unauthorised modifications or electrical operating conditions outside the nominated product specification as detailed in these installation instructions. The benefits to you given by this warranty are in addition to other rights and remedies you have under law. Our goods come with guarantees that cannot be excluded under the Australian Consumer Law. You are entitled to a replacement or refund for a major failure and compensation for any other reasonably foreseeable loss or damage. You are also entitled to have the goods repaired or replaced if the goods fail to be of acceptable quality and the failure does not amount to a major failure.

Warranty term – Residential usage (12) months, Commercial usage (12) months, Replaceable lamps (where supplied) (12) months and batteries where supplied (12) months from date of purchase.

How to make a claim?

Step #1 – Within 30 days of the fault discovery, please contact the original place of the SAL product purchase during standard (local) business hours, with the following information (a) proof of purchase (b) description and quantity of the claimed fault (c) address of installation. (d) operating hours of the product.

Step #2 – It is then the responsibility of the original place of product purchase to report the matter to SAL aftersales;

NSW ACT	SAL National Pty Ltd, 40 Biloela Street Villawood NSW 2163	P # 02 9723 3099
QLD	SAL National Pty Ltd, 36 Whitelaw Place Richlands QLD 4077	P # 07 3879 5999
VICT TAS SA NT	SAL National Pty Ltd, 46-48 Keys Road Moorabbin Victoria 3189	P # 03 9532 3168
WA	SAL National Pty Ltd, 29 Beringarra Av Malaga WA 6090	P # 08 9248 7458

Step #3 - Upon review of your claim and if the product is required to be returned to SAL for technical evaluation, then at the owners expense the product must be returned to SAL as per the above nominated locations.

Step #4 - Pending the evaluation, the claim will be validated resulting in the product being repaired or replaced with the same or best equivalent product at the discretion of SAL, or rejected if the product fault was found to be caused by conditions beyond the responsibility of SAL warranty obligations. Consideration of installation, product removal, return freight and or testing fees are not the responsibility of SAL.

1) The product wireframe drawings in this document are intended for illustration purposes only and may differ from the final physical product.

2) The installation instruction is subject to change without prior notice.
3) NO DIY, installed by a licensed electrician only.

PIXIE is a trademark of SAL National Pty Ltd.

COPYRIGHT © 2022 This document is copyright by SAL National Pty Ltd. Except as permitted under the relevant law, no part of this application note may be reproduced by any process without written permission of and acknowledgment to SAL National.

DISCLAIMER: SAL National reserves the right to alter the specifications, designs or other features of any items and to discontinue any items at any time without notice and without liability. While every effort is made to ensure that all information in this application note is correct, no warranty of accuracy is given and SAL National shall not be liable for any error.

TRADEMARKS: The identified trademarks and copyrights are the property of SAL National Pty Ltd unless otherwise noted.

**Contact Information
SAL National Pty Ltd.**

Web: www.sal.net.au

ABN: 21 633 189 474

All Enquiries:
+61 2 9723 3099
pixiesupport@sal.net.au